

Visual test of M28 fuel cartridges with a torch

1. Hold the lit torch **against** narrower side of the fuel cartridge on the opposite side of the sealing cap

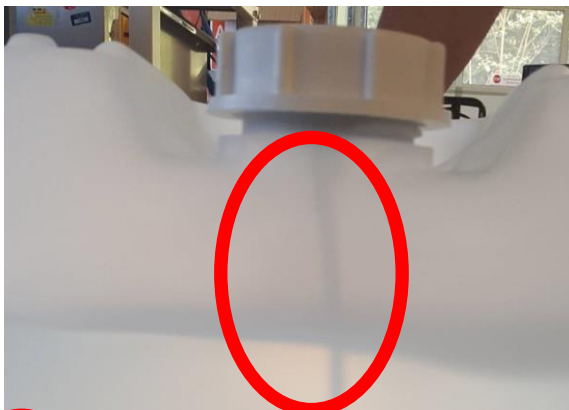
See photo right



2. **On the other side** of the fuel cell you will then see the shadow of the tubes
- If necessary you can change the position of the torch



3. Check that **both tubes** are connected to the valve.



Fuel Cartridge defective



Fuel Cartridge functional

4. In the case where only one tube is visible please reject the fuel cartridge