

MUX-2 (Energy Manager) Installationsanleitung



Lieferumfang:

- MUX-2
- Anschlußkabel SS-MPPT/PS-MPPT (RJ11 ca. 1m)
- Anschlußkabel EFOY-PRO (LAN Kabel RJ45 ca. 1m)

Installationsanleitung MUX-2

MUX-2 zum Anschluß von EFOY-PRO Brennstoffzelle und SS-MPPT oder PS-MPPT-XX Solarladeregler an das GSM-2/GSM-3 Modem

Mit dem MUX-2 können die EFOY PRO Brennstoffzelle und der Solarladeregler SS-MPPT-15L/PS-MPPT-XX gemeinsam an das GSM-2/GSM-3 angeschlossen werden. Auf dem udomi off grid monitor werden die Daten von Brennstoffzelle und Solarladeregler zusammen erfasst und angezeigt. Der Nutzer hat damit alle Informationen zu Brennstoffzelle, Batterie, Solarstrom und Verbraucher im Blick.

Schritt 1:

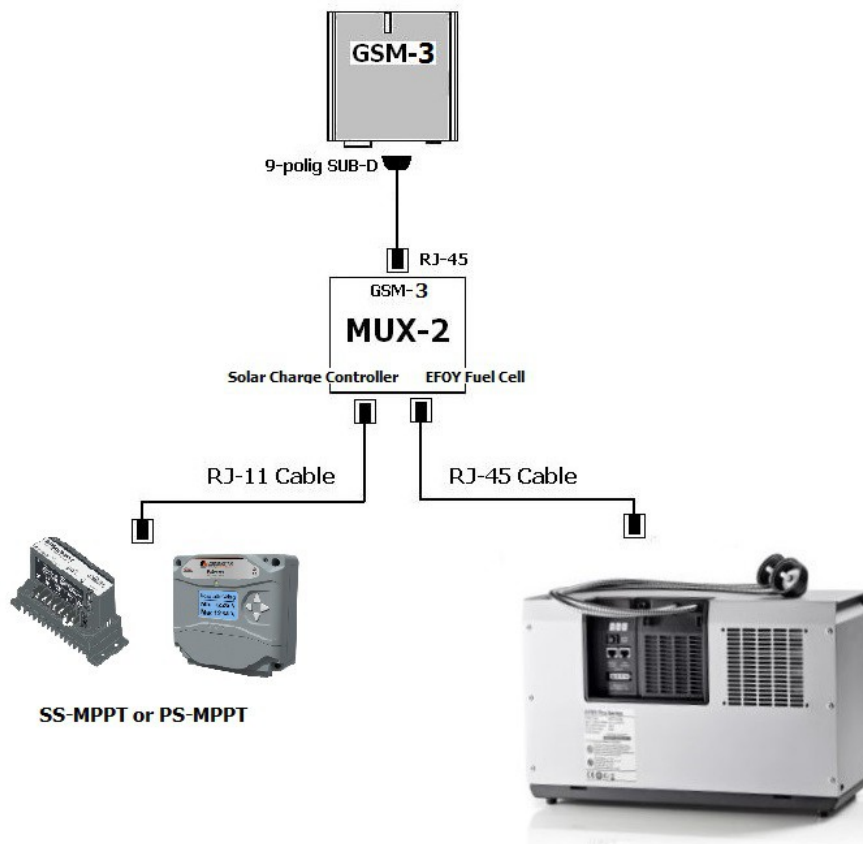
Funktionsbeschreibung	DIP Schalter Position
SS-MPPT-15L	DIP Schalter Position 4 auf ON
PS-MPPT-15L	DIP Schalter Position 8 auf ON (MODBUS)

Schritt 2:

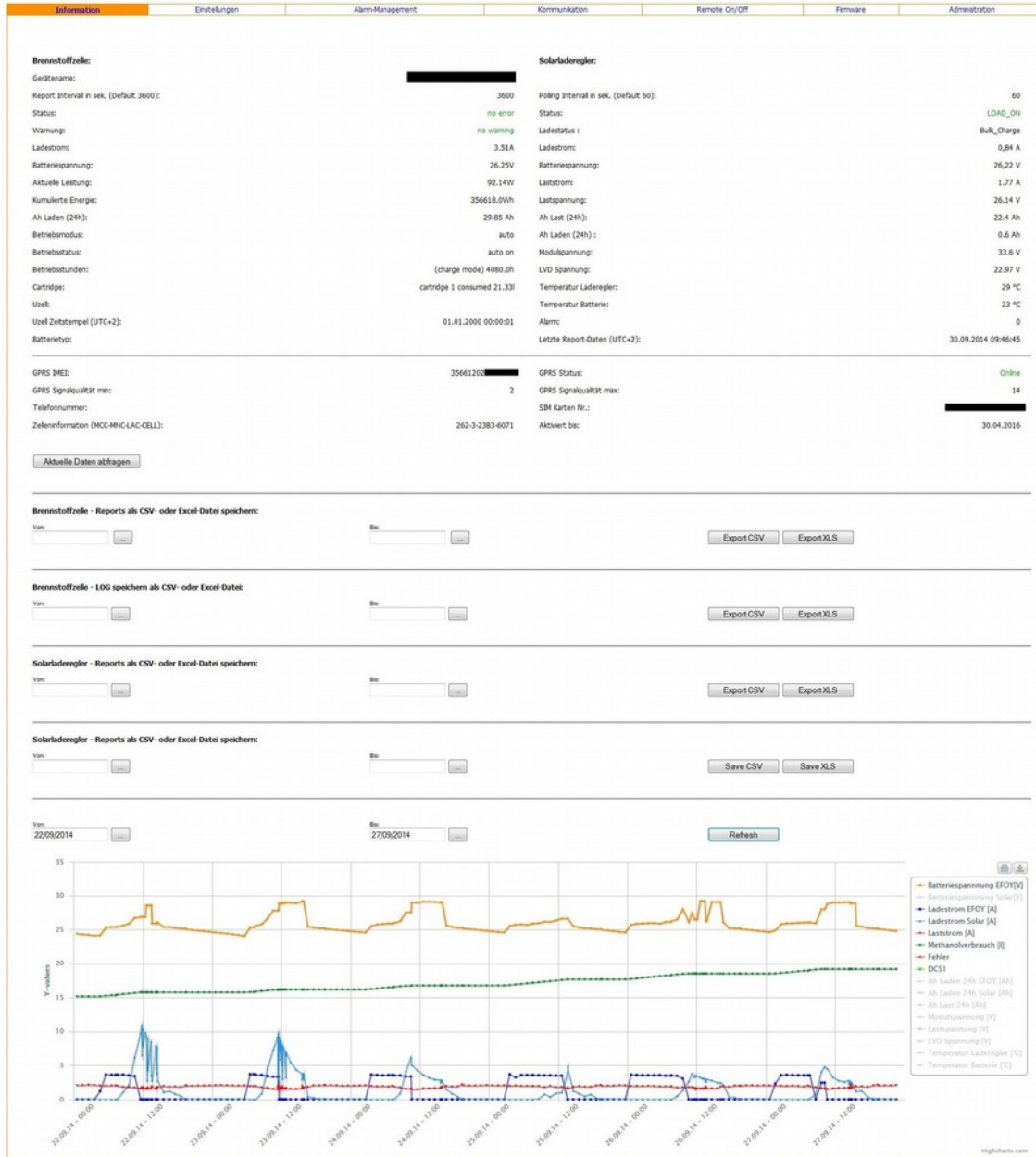
GSM-2/GSM-3 über den MUX-2 mit EFOY PRO (Data Interface) und SS-MPPT-15L/PS-MPPT-XX verbinden.

Nach dem Einschalten erkennt das GSM-2/GSM-3 Modem automatisch ob der MUX-2 angeschlossen ist und überträgt die Daten an das udomi offgrid monitor Portal.

deutsch



Energymanager Webseite – udomi-off-grid-monitor



english

Datenblatt MUX-2

Betriebstemperatur	-30°C bis + 70°C
Lagertemperatur	-30°C bis + 70°C
Luftfeuchtigkeit	0% bis 80% (nicht kondensierend)
Leistungsaufnahme	Max. 500mA (typisch 33mA@12V; 18mA@24V)
Versorgungsspannung	Über SS-MPPT-15L/PS-MPPT-XX Interface 9-30 VDC und EFOY-PRO Interface 9-30 VDC
Abmessungen	LxBxT 68x79.5x26mm

MUX-2 (Energy Manager) Installation and Operation Manual

english



Includes:

- MUX-2
- Cable SS-MPPT/PS-MPPT (RJ11 app. 1m)
- Cable EFOY PRO (LAN cable RJ45 app. 1m)

Installation MUX-2

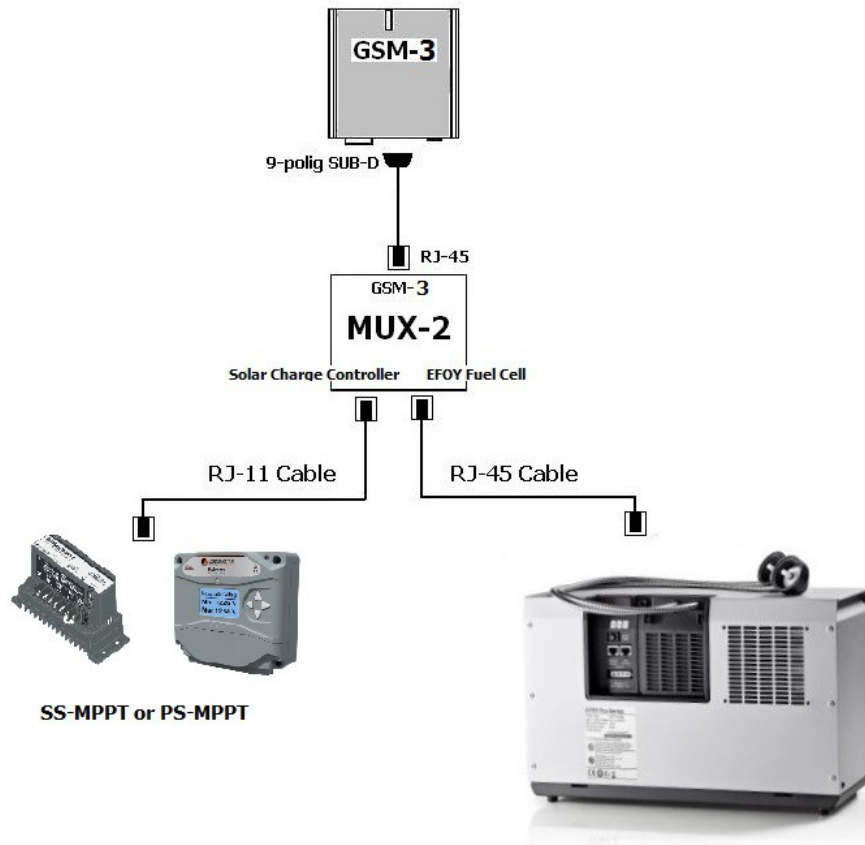
MUX-2 connects EFOY PRO and SS-MPPT-15L or PS-MPPT-XX with GSM-2 modem

With the MUX-2 device users of the GSM-2/GSM-3 modem can now remotely monitor EFOY PRO fuel cell and the SS-MPPT-15L/PS-MPPT-XX solar charge controller together. With this solution the user has all informations of his off grid power system available on the the udomi off grid monitor website. Battery voltage, load current, solar input current, fuel cell charge current and many other informations are available to monitor and optimize your off grid power system.

Step 1:

Solar charge Controller	DIP Switch Position
SS-MPPT-15L	Switch DIP Switch of SS-MPPT-15L No.4 in "ON " Position
PS-MPPT-XX	Switch DIP Switch of PS-MPPT-XX No. 8 in "ON " Position (MODBUS)

Step 2:



Connect GSM-2/GSM-3 via MUX-2 with EFOY-PRO and SS-MPPT-15L/PS-MPPT-XX as shown above. GSM-2/GSM-3 will automatically detect if MUX-2 is connected.

Energymanager Website – udomi-off-grid-monitor

Information
Settings
Alarm management
Communication
Remote On/Off
Firmware
Administration

Fuel cell:

Device name: XXXXXXXXXX

Report interval in sec.(Default 3600): 3600

Status: no error

Warning: no warning

Charge current: 3.44A

Battery voltage: 26.81V

Actual power: 92.23W

Accumulated energy: 356708.0Wh

Ah load (24h): 33.2 Ah

Operating mode: auto

Operating status: (charge mode) 4081.0h

Operating hours: cartridge 1 consumed 21.42l

Usoelt: Jan 1, 2009 12:00:01 AM

Usoel timestamp (UTC+2): Jan 1, 2009 12:00:01 AM

Battery type: XXXXXXXXXX

Solar controller:

Poling interval in sec. (Default 60): 60

Status: LOAD_OK

Charge status: Bulk_Charge

Charge current: 2.55 A

Battery voltage: 26.79 V

Load current: 1.8 A

Load voltage: 26.75 V

Ah load (24h): 24.2 Ah

Ah charge (24h): 2.6 Ah

Array voltage: 34.04 V

LVD voltage: 23 V

Temperature heatink: 34 °C

Temperature battery: 24 °C

Alarm: 0

Last report received (UTC+2): Sep 30, 2014 10:46:47 AM

GPRS IMEI: 3566120-XXXXXXXXXX GPRS status: Online

GPRS signal quality min: 2 GPRS signal quality max: 14

Phone number: XXXXXXXXXX SIM card ID: XXXXXXXXXX

Cell information (MCC/MNC/LAC/CELL): 262-3-2383-6071 Valid until: 30.04.2016

Fuel cell - Save reports as csv- or xls-file:

From: To:

Fuel cell - Save LOG as csv or excel file:

From: To:

Solar controller - Save reports as csv- or xls-file:

From: To:

From: To:

english

english

Datasheet MUX-2

Operating temperature range	-30°C to + 70°C
Storage temperature range	-30°C to + 70°C
Humidity	0% to 80% (not condensing)
Power consumption	Max. 500mA (33mA@12V; 18mA@24V typical)
Supply voltage	Via SS-MPPT-15L/PS-MPPT-XX interface 9-30 VDC and EFOY-PRO interface 9-30 VDC
Dimensions	LxWxD 68x79.5x26mm